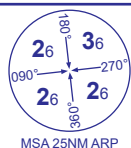
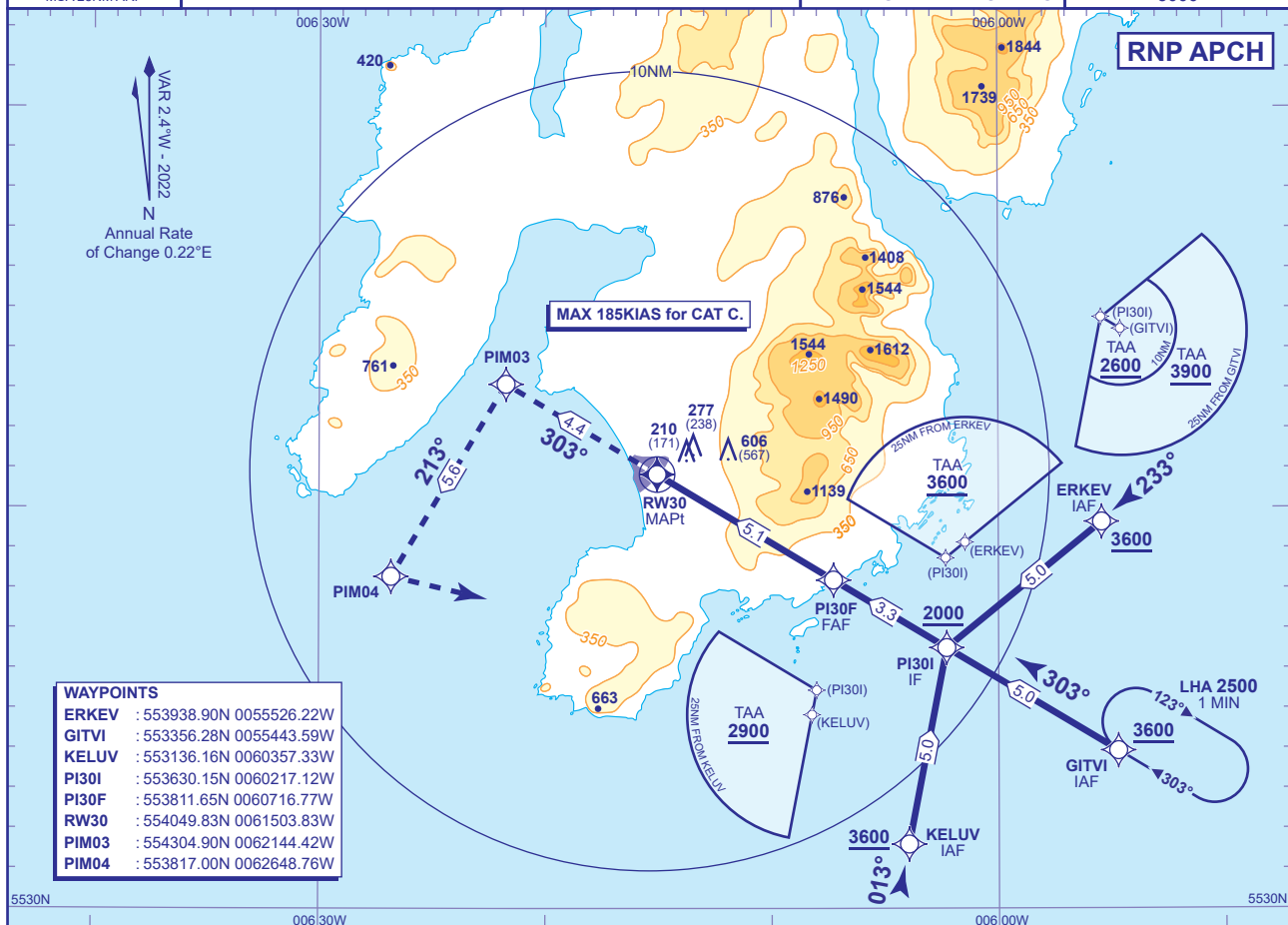


**ISLAY
RNP
RWY 30
(CAT A,B,C)**



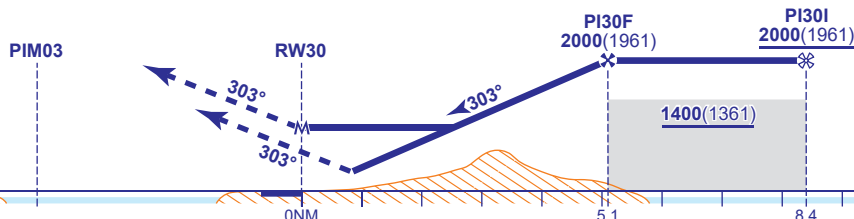
MSA 25NM ARP

AFIS	123.155	ISLAY INFORMATION	AD ELEVATION 56	RNP RWY 30 (ACFT CAT A,B,C)
			THR ELEVATION 39	
			OBSTACLE ELEVATION 606 AMSL (567) (ABOVE THR)	
			BEARINGS ARE MAGNETIC	
				TRANSITION ALTITUDE 3000



NM to RW30	5	4	3	2	1
ALT(HGT)	1950(1911)	1580(1541)	1200(1161)	830(791)	460(421)

Continuous climb to **3600**.
Initially climb straight ahead to **PIM03**, then turn left to **PIM04** and **GITVI** to join the hold.



Aircraft Category		A	B	C	Rate of descent	G/S KT	160	140	120	100	80
OCA (OCH)	LNAV	1000(961)	1000(961)	1000(961)		FT/MIN	990	870	740	620	500
VM(C)OCA (OCH AAL)	Total Area	1020(964)	1040(984)	1830(1774)							
	150°M clockwise to 035°M	1020(964)	1020(964)	1020(964)							

NOTE 1 Use of this procedure is strictly PPR from the aerodrome operator.
2 Prior to commencing the procedure, pilots are to broadcast on AFIS 123.155 with flight details and intentions.
3 ATC will normally require aircraft to hold not lower than **3600**.

CHANGE (3/24): RWY DESIGNATOR.